

Equal to every challenge:
Kärcher portal washing stations for passenger vehicles.





The perfect basis for a brilliant result.

In the professional car washing business, what counts is speed, efficiency and quality. The portal washing stations in the CB Line from Kärcher feature fast start-up and low maintenance, and they can be adapted to virtually any customer request. Reduce your costs and boost your profit with durable portal car washing stations from Kärcher.



**Focus Energy
Silber 2006**





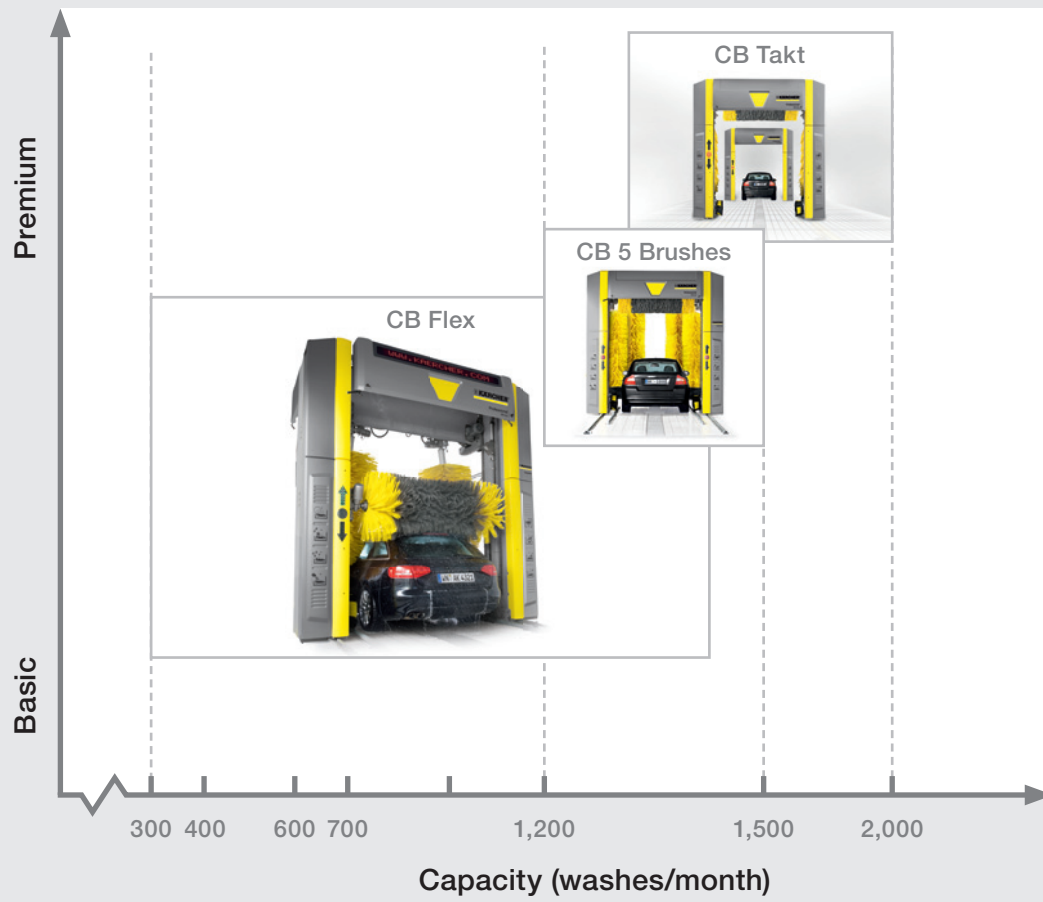
Contents

Introduction	Page	4
CB 1 Eco	Page	6
CB Flex	Page	7
CB 5 Brushes	Page	8
CB Takt	Page	9
Kärcher system solutions	Page	10
Technical data	Page	11
Water recycling systems	Page	12
Cleaning agents	Page	13
Kärcher self-service systems	Page	14
Kärcher CB product configurator	Page	15

An investment that pays off: the Kärcher CB Line.

The portal washing stations in Kärcher's CB Line feature top quality and maximum efficiency. Especially durable parts and hot-dip galvanised steel components ensure low-maintenance system operation. So you can concentrate on what matters: profitable vehicle cleaning.





The perfect entry-level model: Kärcher CB 1 Eco.

As an entry-level model, the CB 1 Eco portal washing station is especially suitable for locations with relatively low volume.



1 Sheer elegance

For internal use and locations with up to 400 wash events per month.

2 Perfect positioning

The wheel trough in the washing area keeps the vehicle in the right position.

3 Intensive foam cleaning

Softens tough dirt so it can be easily removed by brush cleaning.

4 Optimal pre-cleaning

High-pressure side cleaning ensures optimal pre-cleaning in the sill and side area.

5 Reliable drying

The contour-guided roof drier dries the vehicle quickly and reliably.

Made-to-measure efficiency: Kärcher CB Flex.

The CB Flex portal washing station provides total flexibility and can be fully tailored to your personal requirements.



1 Perfect design

Custom-designed systems and brushes available.

2 Brush configuration options

Choose from polyethylene or Carlite brushes, a mix of both materials, or cloth brushes.

3 Several high-pressure options

A variety of high-pressure options (e.g. sill or sill/side) and pure high-pressure washing (high pressure all round) can be implemented easily.

4 Gentle washing

Variable-speed drive and lift motors for the roof brush and roof drier ensure a gentle washing process.

5 All-round drying

Perfect all-round drying thanks to two separate side driers and a contour-guided roof drier with pivoting vanes for optimal drying of the vehicle roof.



Washing programme

Intensive front pre-cleaning

The perfect solution for insect residues on the front of the vehicle.



Intensive full pre-cleaning

2-in-1 loosening of insect residue and dirt.



Rim prespraying

Removes even the most stubborn dirt from wheel rims.



Foam polish

Closes and seals the vehicle surface and even repairs small scratches.

For superior all-round care: Kärcher CB 5 Brushes.

Compact CB 5 Brushes are designed for high vehicle throughput. Four side brushes, one roof brush and a wheel wash ensure perfect all-round cleaning.



1 High vehicle throughput

The short 180-second vehicle wash time enables high throughput.



2 Compact system

A wash bay length of only 10 m is required for washing 4.50 m vehicles.

Equal to every task: Kärcher CB Takt.

CB Takt fills the gap between portal washing stations and conventional wash lines and is the ideal system solution for locations with high vehicle throughput. The two portals in the series enable simultaneous washing and drying of two vehicles.



1 High vehicle throughput

Designed for 1,200 or more washes per month. Excellent washing and drying results even at maximum speed.

2 Perfect drying

The separate drying area with roof and side driers enables perfect drying.

3 Maximum convenience

The customer simply remains seated in the vehicle during the entire washing and drying process.

Satisfaction right from the start: Kärcher system solutions.

For car dealers, service stations, investors and washing centres, Kärcher ensures satisfaction right from the start. Kärcher offers well-conceived system solutions for every application and every user, with outstanding quality and cost effectiveness. That's something you can always rely on – for over 75 years now.



1 Kärcher for service stations

The well-designed and reliable cleaning systems ensure maximum customer satisfaction right from the start. For everything from portal washing stations to self-service washing stations and vacuums or environmentally friendly water recycling, Kärcher is a strong partner for cost-effective vehicle cleaning at service stations.

2 Kärcher for car dealers

Clean cars ensure brilliant sales figures. That's why Kärcher offers car dealers tailored and environmentally compatible solutions with excellent value for money: portal washing stations for passenger vehicles, multi-station self-service facilities and cost-saving water recycling.

3 Kärcher for washing centres

Kärcher is your full-spectrum supplier for profitable vehicle cleaning in modern washing centres, for everything from initial configuration with portal washing stations or multi-station washing systems to upgrading existing systems with innovative equipment.

At a glance: the technical data.

	CB 1/23 Eco	CB 1/25 Eco	CB 1/28 Eco
Technical data			
Washing height	2,300 mm	2,500 mm	2,800 mm
System height	3,150 mm	3,350 mm	3,650 mm
System width	4,035 mm	4,035 mm	4,035 mm
Fresh water supply	50 l/min at 4–6 bar	50 l/min at 4–6 bar	50 l/min at 4–6 bar
Connected load	10 kW	10 kW	10 kW
Power supply	3~ / 400 V / 50 Hz	3~ / 400 V / 50 Hz	3~ / 400 V / 50 Hz
Number of brushes	3	3	3

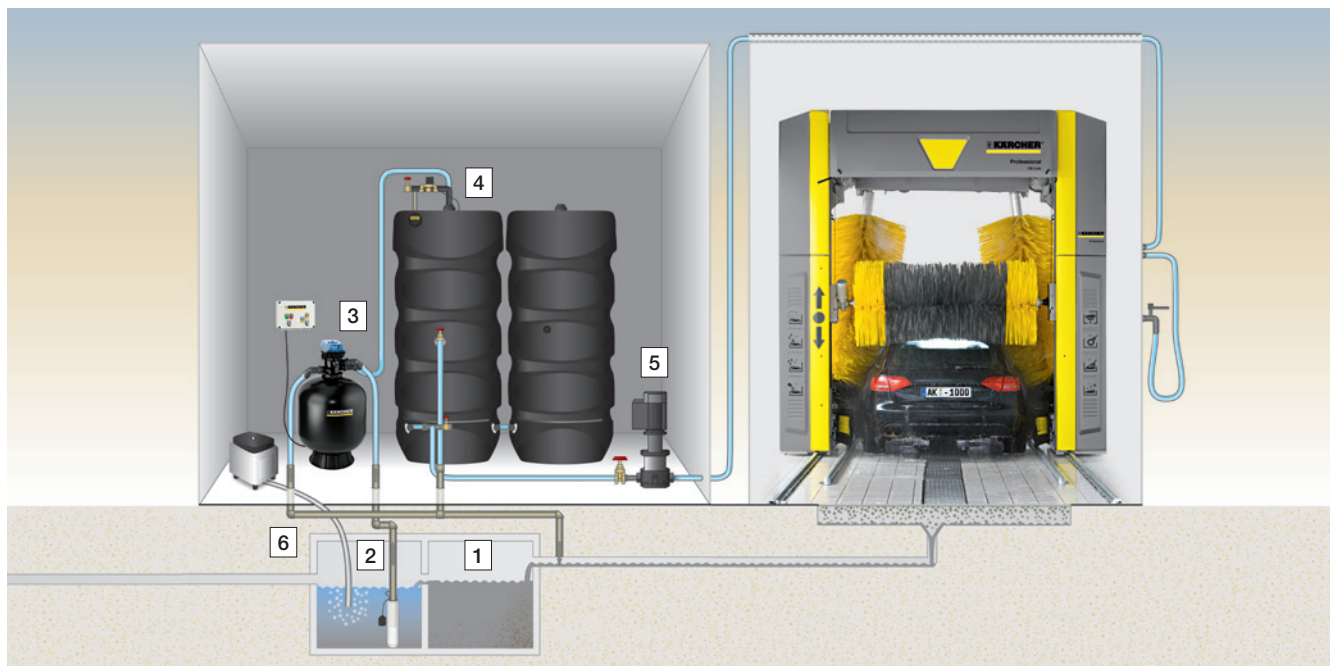
	CB Flex/23	CB Flex/25	CB Flex/28
Technical data			
Washing height	2,300 mm	2,500 mm	2,800 mm
System height	3,150 / 3,215 mm	3,350 / 3,415 mm	3,650 / 3,715 mm
System width	4,035 mm	4,035 mm	4,035 mm
Fresh water supply	100 l/min at 4–6 bar	100 l/min at 4–6 bar	100 l/min at 4–6 bar
Connected load (including side drier)	16 kW	16 kW	16 kW
Power supply	3~ / 400 V / 50 Hz	3~ / 400 V / 50 Hz	3~ / 400 V / 50 Hz
Number of brushes	3	3	3

	CB 5 Brushes/23	CB 5 Brushes/25	CB 5 Brushes/28
Technical data			
Washing height	2,300 mm	2,500 mm	2,800 mm
System height	3,215 mm	3,415 mm	3,715 mm
System width	4,035 mm	4,035 mm	4,035 mm
Fresh water supply	140 l/min at 4–6 bar	140 l/min at 4–6 bar	140 l/min at 4–6 bar
Connected load (including side drier)	22 kW	22 kW	22 kW
Power supply	3~ / 400 V / 50 Hz	3~ / 400 V / 50 Hz	3~ / 400 V / 50 Hz
Number of brushes	5	5	5

	CB Takt/23	CB Takt/25	CB Takt/28
Technical data			
Washing height	2,300 mm	2,500 mm	2,800 mm
System height	3,215 mm	3,415 mm	3,715 mm
System width	4,035 mm	4,035 mm	4,035 mm
Fresh water supply (wet portal)	100 l/min at 4 bar	100 l/min at 4 bar	100 l/min at 4 bar
Fresh water supply (dry portal)	50 l/min at 4 bar	50 l/min at 4 bar	50 l/min at 4 bar
Connected load (wet portal)	5 kW	5 kW	5 kW
Connected load (dry portal)	10 kW	10 kW	10 kW
Power supply	3~ / 400 V / 50 Hz	3~ / 400 V / 50 Hz	3~ / 400 V / 50 Hz
Number of brushes (wet portal)	3	3	3

Environmental care: Kärcher water recycling systems.

Kärcher water recycling systems save money while protecting the environment. Using innovative physical filtration, wastewater is fully fed back to the washing process and fresh water consumption is reduced by up to 85%.



The recycling loop

The wastewater flows through the sediment basin **1** to the pump storage basin **2**. From there it is pumped through a sand filter with automatic backflush capability **3** into the recycled water tank **4**. A supply pump **5** draws water from this tank for the washing process. Excess water can be discharged

via the overflow of the pump storage basin **6** into the sewer either directly or via a separator, depending on legal regulations. As an alternative option, the wastewater can be discharged directly from the recycled water tank **4** into the sewer. In this case there is no connection between the pump storage basin and the sewer.



Technical data

	WRP 8000
Flow rate	8,000 l/h
Connected load	1.30 kW
Power supply	1~ / 230 V / 50 Hz
Buffer tank capacity	1,000 – 3,000 l

Effective against dirt: Kärcher cleaning agents

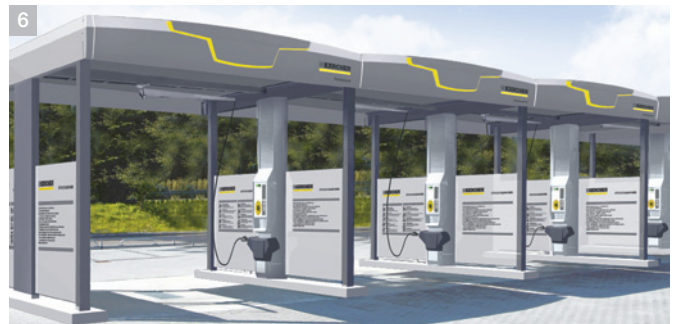
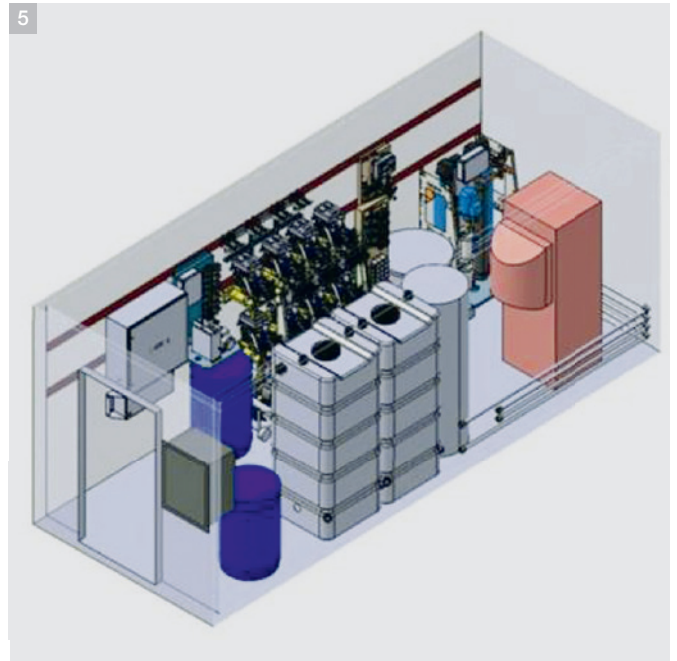
Product description		Application	Primary mixture	Dosage	Properties	Container size	PU*	Order No. / Quantity
Presprayers and rim cleaners for cars and utility vehicles								
	Prewash RM 803 ASF Active, gentle high-pressure prespraying agent. For trouble-free acceleration of the softening and removal of oil and grease deposits as well as insect residues.	High-pressure cleaners	1+2	0.5–2 %	alkaline pH: 13.2	10 l	1	6.295-040.0
		Car wash	1+2	0.5–2 %		20 l	1	6.295-435.0
		Self-service washing stations	1+2	0.5–2 %		200 l	1	6.294-978.0
		Spray units		2 %		10 l	1	6.295-547.0
						20 l	1	6.295-548.0
			200 l	1	6.295-549.0			
	Intensive cleaner, acid, RM 804 ASF The acid prespraying agent with corrosion protection is effective in removing mineral contamination such as plaster, lime, mortar and concrete from construction site vehicles. May also be used as a cleaner for stainless steel.	High-pressure cleaners		1–3 %	acidic pH: 1	20 l	1	6.295-595.0
		Car wash,		1–3 %		200 l	1	6.295-598.0
		Spray units		1–3 %				
	Intensive wheel cleaner RM 800 ASF Highly effective wheel cleaner concentrate. Active foam enables the gentle removal of all normal rim contamination, e.g. brake dust, rubber dust, road salt deposits, limescale and salt residues.	Spray units		10 %	acidic pH: 0.3	20 l	1	6.295-441.0
		Self-service washing stations		10 %		200 l	1	6.295-452.0
		Car wash		10 %				
	Wheel cleaner, alkaline, RM 801 Special rim cleaner for all coated alloy and steel rims (except uncoated high-gloss special-purpose rims). Gentle action effectively removes the most stubborn dirt, such as road dust, baked-on brake dust, tyre dust and deposits of winter salt. Does not attack concrete floors or wheel troughs.	Spray units		10 %	alkaline pH: 13.5	20 l	1	6.295-323.0
		Self-service washing stations		10–20 %		200 l	1	6.295-401.0
		Car wash		10–20 %				
				1+9 to 1+4				
High-pressure and foam wash								
	Active foam cleaner, NANO RM 816 ASF Highly active, wax-compatible shampoo for brush cleaning in automatic washing systems. A special combination of active ingredients improves brush glide to protect the vehicle surface and prepare it optimally for treatment with Nano RM 832 ASF shine dryer. VDA-compliant. ²⁾	Car wash		0.20 %	slightly alkaline pH: 8.7	20 l	1	6.295-440.0
						200 l	1	6.295-322.0
	Car shampoo RM 811 ASF Highly active, wax-compatible shampoo for brush cleaning in automatic washing systems. Specially formulated to reduce sliding friction of brushes and thus protect the surface of the vehicle. VDA-compliant. ²⁾	Car wash		0.2 %	slightly alkaline pH: 8.7	20 l	1	6.295-439.0
						200 l	1	6.295-140.0
	Active foam RM 812 ASF Very powerful active foam brush shampoo. Specially formulated to protect vehicle surfaces as well as the brushes. VDA-compliant. ²⁾	Self-service washing stations	1+3	0.8 %	slightly alkaline pH: 8.9	20 l	1	6.295-430.0
		Car wash		0.2 %		200 l	1	6.295-137.0
Waxes and drying aids								
	Shine dryer NANO RM 832 Liquid pearl wax with special nano particles for use in vehicle washes, coin-op washes and high-pressure cleaners. This nano finisher quickly breaks down the water film to produce very good drying results. VDA-compliant. ¹⁾	Car wash		0.1–0.2 %	slightly acidic pH: 4	20 l	1	6.295-432.0
		Self-service washing stations		0.1–0.2 %		200 l	1	6.295-320.0
		High-pressure cleaners	1+9	0.1–0.2 %				
	Hot wax RM 820 This liquid hot wax produces a weather-resistant coating which protects vehicles against corrosion. Contains natural carnauba wax. VDA-compliant. ¹⁾	High-pressure cleaners	1+9	0.1–0.2 %	neutral pH: 6.3	20 l	1	6.295-428.0
		Car wash		0.1–0.2 %		200 l	1	6.295-143.0
		Self-service washing stations	1+9	0.1–0.2 %				
	Super pearl wax RM 824 Drying, protection and care all in one. This liquid pearl wax quickly breaks down the water film and ensures very good drying characteristics, especially if hard water is used. VDA-compliant. ¹⁾	Car wash	un-diluted	0.1–0.2 %	slightly acidic pH: 4	20 l	1	6.295-438.0
		High-pressure cleaners	1+9	0.1–0.2 %		200 l	1	6.295-074.0
	Kärcher Polish Plus RM 831 Innovative vehicle care agent with special care formula for long-lasting preservation. Protects vehicles against traffic grime, insects, acid rain and other harmful environmental influences. VDA-compliant. ¹⁾	Car wash		40–80 ml/vehicle	slightly acidic pH: 3.5	10 l	1	6.295-110.0
						20 l	1	6.295-427.0

¹⁾ Conforms to VDA Class A ²⁾ Conforms to VDA Class B

* PU = packaging unit

An ideal addition: Kärcher self-service systems.

Round off your service portfolio with Kärcher system solutions for self-service facilities. From self-service vacuums and self-service single-station units to multi-station self-service washing systems, Kärcher offers everything you need to fulfil every individual requirement.



1 Self-service vacuums
Thorough vehicle interior cleaning with Kärcher self-service vacuums in various performance classes.

2 HDS-C single-station unit
The complete solution for pre-cleaning and quick touch-up washing.

3 SB Wash single-station unit
The complete solution for pre-wash and foam wash in very tight quarters.

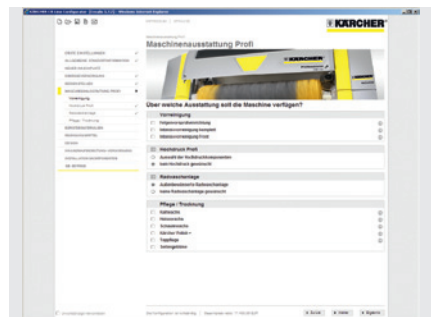
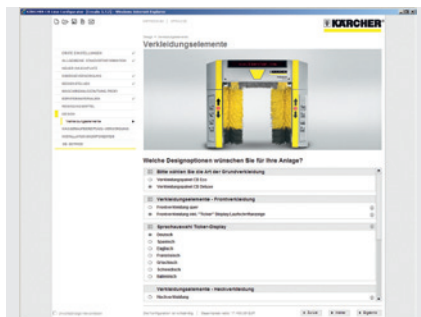
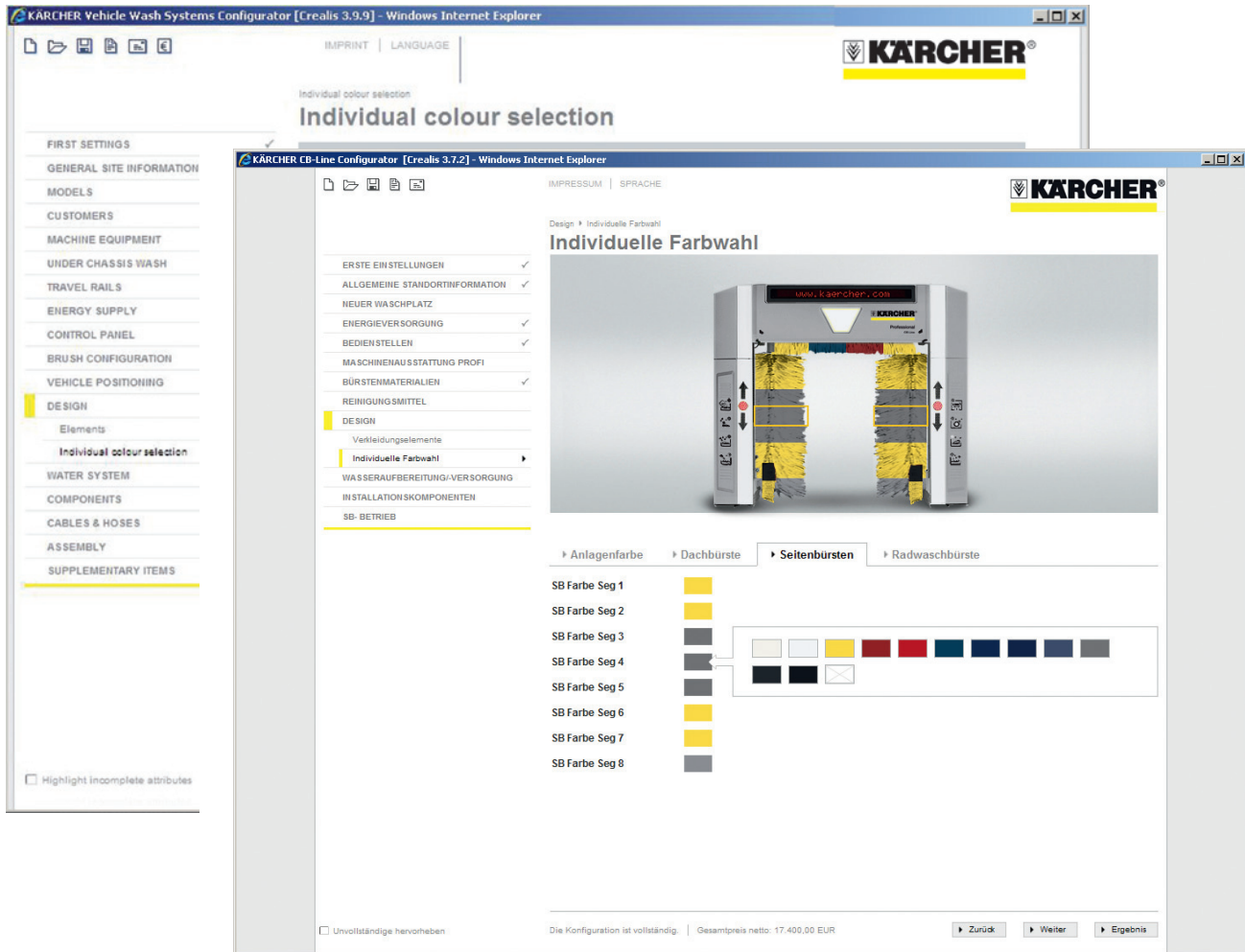
4 SB MB multi-station system
All of the SB MB equipment for 2 to 4 washing stations is pre-installed in the factory. All you need to do on site is to set it up and connect it.

5 SB MU multi-station system
Modular equipment for flexible site configuration with 4 to 8 washing stations.

6 Steel structure for Kärcher self-service washing stations
Available with two roof versions and three types of spray partition wall.

Exactly as you wish: the Kärcher CB product configurator.

Plan and arrange your CB system according to your own needs. The Kärcher CB product configurator enables precise planning and exact costing. Kärcher's expert service staff are also available to give you advice at any time. Simply make an appointment – we look forward to meeting you.



Please contact us for more information:**Head Office Germany**

Alfred Kärcher GmbH & Co. KG
Alfred-Kärcher-Straße 28-40
71364 Winnenden

Phone +49 7195-14-0
Fax +49 7195-14-2212
www.kaercher.com

North America

Kärcher North America
750 W. Hampden Avenue
Suite 400
Englewood, CO 80110
U.S.A.

Phone +001 303-738-2400
Fax +001 303-738-2818
www.karcherna.com

United Kingdom

Kärcher (UK) Ltd.
Kärcher House
Beaumont Road
Banbury
Oxon OX16 1TB

Phone +44 1295-752-100
Fax +44 1295-752-103
www.karcher.co.uk

Ireland

Kärcher Ltd.
C1 Centrepoint Business Park
Oak Road
Dublin 12

Phone +353 1-409-7777
Fax +353 1-409-7775
www.karcher.ie

Regional Head Office**Southeast Asia**

Kärcher South East Asia
Pte. Ltd.
5 Toh Guan Road East,
#01-00 Freight Links
Express Distripark,
Singapore 608831

Phone +65 68971811
Fax +65 68971611
www.karcher.com.sg

Hong Kong

Kärcher Ltd.
Unit 10, 17/F, APEC Plaza
49 Hoi Yuen Rd.,
Kwun Tong, KLN

Phone +852 2-357-5863
Fax +852 2-357-5632
www.karcher.com.hk

Australia

Kärcher Pty. Ltd.
40 Koornang Road
Scoresby VIC 3179
Melbourne, Victoria

Phone +61 3-9765-2300
Fax +61 3-9765-2399
www.karcher.com.au

New Zealand

Kärcher Ltd.
66 Allens Road
East Tamaki
Auckland

Phone +64 9-274-4603
Fax +64 9-274-6932
www.karcher.co.nz

South Africa

Kärcher Pty. Ltd.
144 Kuschke Street
Meadowdale
Edenvale
1614
South Africa

Phone +27 11-574-5360
Fax +27 11-454-4682
www.karcher.co.za

United Arab Emirates

Kärcher FZE
P.O. Box 17416
Plot No S-10104, South Zone
Jebel Ali Free Zone, Dubai

Phone +971 4-886-1177
Fax +971 4-886-1575
www.kaercher.com